

HIGH RIDGE COMMERCE CENTER P.I.D.

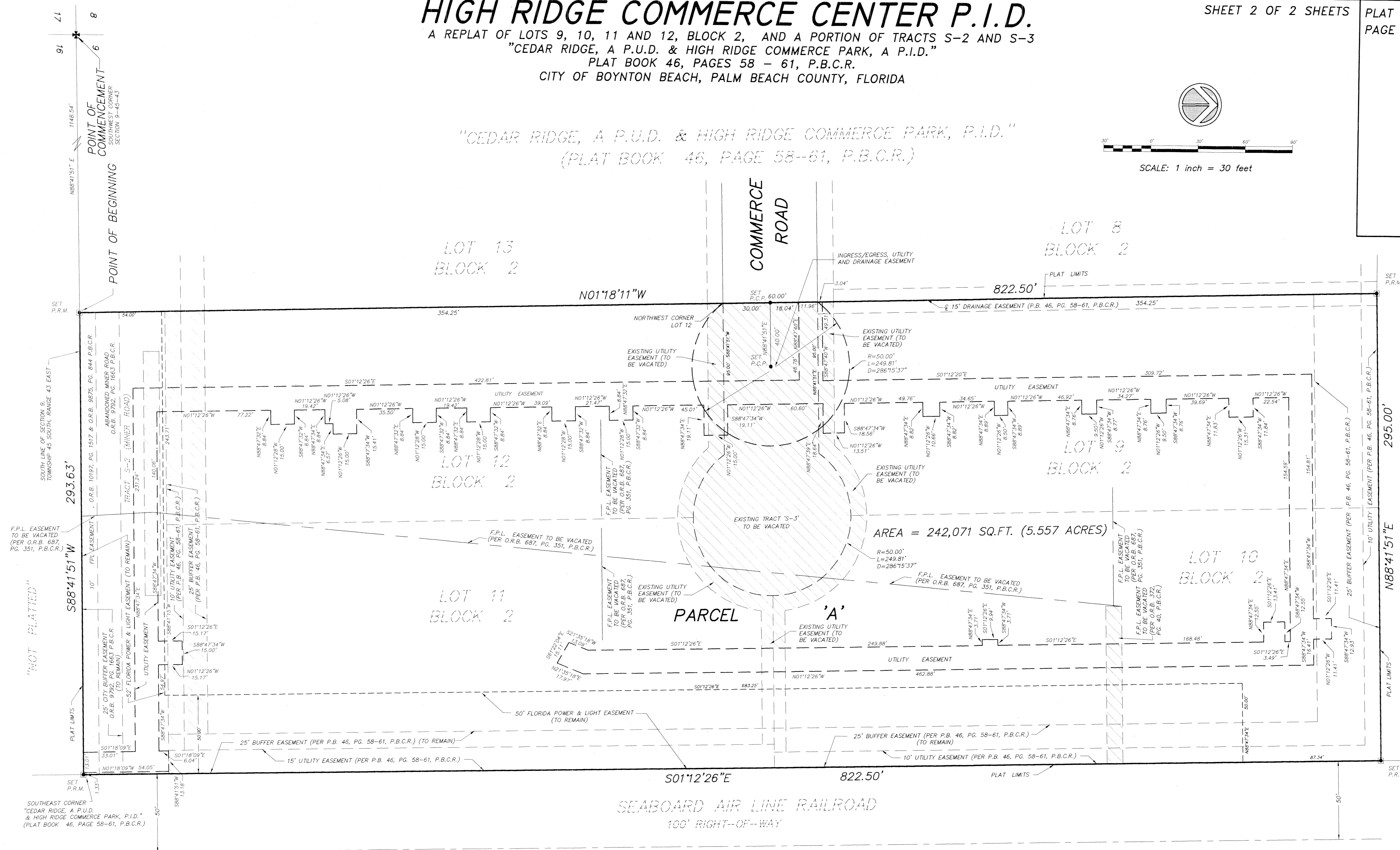
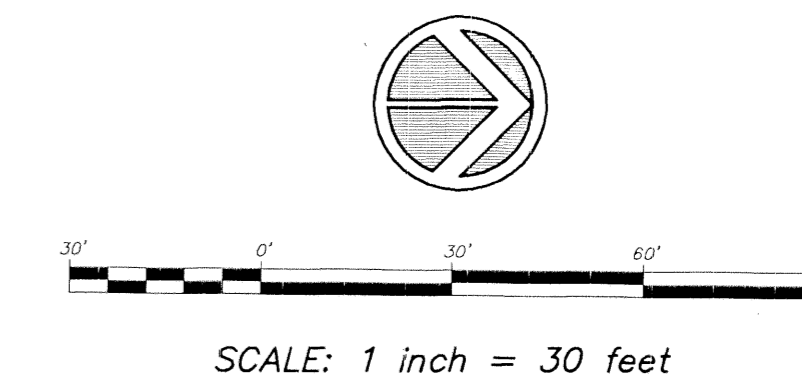
A REPLAT OF LOTS 9, 10, 11 AND 12, BLOCK 2, AND A PORTION OF TRACTS S-2 AND S-3
 "CEDAR RIDGE, A P.U.D. & HIGH RIDGE COMMERCE PARK, A P.I.D."
 PLAT BOOK 46, PAGES 58 - 61, P.B.C.R.
 CITY OF BOYNTON BEACH, PALM BEACH COUNTY, FLORIDA

SHEET 2 OF 2 SHEETS

PLAT BOOK _____
 PAGE _____

143

"CEDAR RIDGE, A P.U.D. & HIGH RIDGE COMMERCE PARK, P.I.D."
 (PLAT BOOK 46, PAGE 58-61, P.B.C.R.)



PLAT NOTES:

1. THIS PLAT, AS RECORDED IN ITS GRAPHIC FORM IS THE OFFICIAL DEPICTION OF THE SUBDIVIDED LANDS DESCRIBED HEREIN AND WILL IN NO CIRCUMSTANCES BE SUPPLANTED IN AUTHORITY BY ANY OTHER GRAPHIC OR DIGITAL FORM OF THE PLAT. THERE MAY BE ADDITIONAL RESTRICTIONS THAT ARE NOT RECORDED ON THIS PLAT THAT MAY BE FOUND IN THE PUBLIC RECORDS OF THIS COUNTY.
2. GROSS AREA OF PLATTED LANDS IS 242,071 SQ.FT. (5.557 ACRES), MORE OR LESS.
3. NO BUILDINGS OR STRUCTURES SHALL BE PLACED WITHIN EASEMENTS.
4. BEARINGS SHOWN HEREON ARE REFERRED TO "CEDAR RIDGE, A P.U.D. & HIGH RIDGE COMMERCE PARK, A P.I.D." ACCORDING TO THE PLAT THEREOF, DERIVED FROM THE WEST LINE OF LOTS 9 AND 12, BLOCK 2, HAVING A BEARING OF S01°18'11"E.

LEGEND:

- P.B.C.R. = PALM BEACH COUNTY RECORDS
- O.R.B. = OFFICIAL RECORDS BOOK
- CL = CENTERLINE
- P.R.M. = PERMANENT REFERENCE MONUMENT (4" x 4" CONCRETE MONUMENT & CAP LB # 7019)
- P.C.P. = PERMANENT CONTROL POINT (NAIL & DISC LB # 7019)
- NO. = NUMBER
- PG. = PAGE
- P.B. = PLAT BOOK
- |- = BREAK IN LINE SCALE
- Sq. Ft. = SQUARE FEET
- A = ARC
- D = DELTA
- R = RADIUS
- U.E. = UTILITY EASEMENT

RECORD PLAT PREPARED BY:

Sun-Tech Engineering, Inc.
 Engineers - Planners - Surveyors
 Certificate of Authorization Number LS 7019
 1600 West Oakland Park Boulevard Phone (954)777-3123
 Ft. Lauderdale, FL 33311 Fax (954)777-3114
 E-Mail: suntech@gate.net

"CEDAR RIDGE, A P.U.D. & HIGH RIDGE COMMERCE PARK, P.I.D."
 PARCEL "C"
 (PLAT BOOK 46, PAGE 58-61, P.B.C.R.)